

iSBX-6712-3317U

Intel® Core™ i5 Dual Core 3317U Processor based Fanless Embedded Box PC with 6x USB Ports/4x COM Ports/VGA/Dual Gigabit LAN



FEATURES

- Intel® Core™ i5 Dual Core 3317U Processor
- Embedded Memory up to 8.0 GB. Standard 4GB
- Dual Realtek® RTL 8111E Gigabit Ethernet.
- Integrated Intel® HD Graphics with VGA connector
- Realtek® ALC662 High Definition Audio chip on-board
- Multi I/O: 6 x USB, 4 x COM ports, 1 x SATA
- Expansion Slot: 1 x Mini SATA socket for SSD, 1 x Mini-PCIE socket for WIFI/3G 1 x SIM card slot for 3G, 2 PCI or 2 PCIe x1 slots

Introduction

iSBX-6712-3317U is a Rugged Industrial Box Computer based on Intel® Core™ i5-3317U Dual Core Processor. Packed with up to 8GB of System memory, 4 COM ports, 6 USB Ports, mSATA for Solid State Storage, 1 SATA Ports for SSD or Hard disk. iSBX-6712-3317U graphics are supported by Intel® integrated HD with VGA connector at the rear. System Sound is powered by Realtek® ALC662 chipset. One Mini PCIE Expansion socket allows user to add WIFI/3G/Bluetooth modules to their applications and 2 PCI or PCIe x1 Slots for application cards.

iSBX-6712-3317U is ideal for Industrial Automation, Digital Signage, Kiosk, ATM, Networking and rugged application that requires high performance.

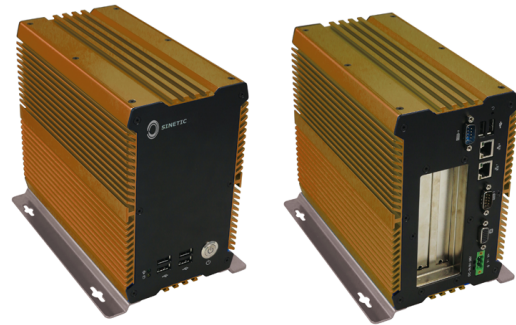
Specification

System	
Processor	Intel® Core™ i5 Dual Core 3317U Processor (22nm, 1.8Ghz, 2MB L2 Cache)
BIOS	AMI EMI 32MB SMT/DIP-SPI Flash ROM
System Memory	Embedded Memory maximum up to 8GB. Standard is 4GB
Chipset	Intel® QM77 Express Chipset
Video	Integrated Intel® HD Graphic card support VGA, LVDS input
Ethernet	Dual RTL8111E PCI-E Gigabit Ethernet LAN, support RTL/PXE diskless booting Support Wake-on-LAN
Internal I/O	2 x CPU/SYS Chassis fan connectors 1 x Audio I/O expansion header 4 x COM expansion headers (COM 1 can support 422/485) 1 x Mini-PCIE socket for WIFI/3G; 1 SATA Ports
Rear I/O	1 x 12V - DC power Jack (2 PIN Connector) 1 x VGA port 6 x USB 2.0 port 2 x 1000M RJ45 port 2 x Audio I/O interfaces (Line_out, Mic_in) 2 x RS-232 9 pin Connector (Optional COM 1 can support RS422/485)
Watchdog Timer	Programmable watchdog timer for 1~255 seconds.
Audio	Realtek® ALC662 high-definition audio chip on-board. Support Line-OUT, MIC_IN
Power	One 12V DC Power input
Cooling	One CPU cooling FAN connector nearby CPU socket One system fan connectors for system cooling
Mechanical & Environment	
Dimension	215 x 185 x 115mm (LxWxH)
Operation temperature	-10°C~60°C (-4°F~158°F)
Storage temperature	-20°C~80°C (-4°F~176°)
Relative humidity	0%~95% (non-condensing)

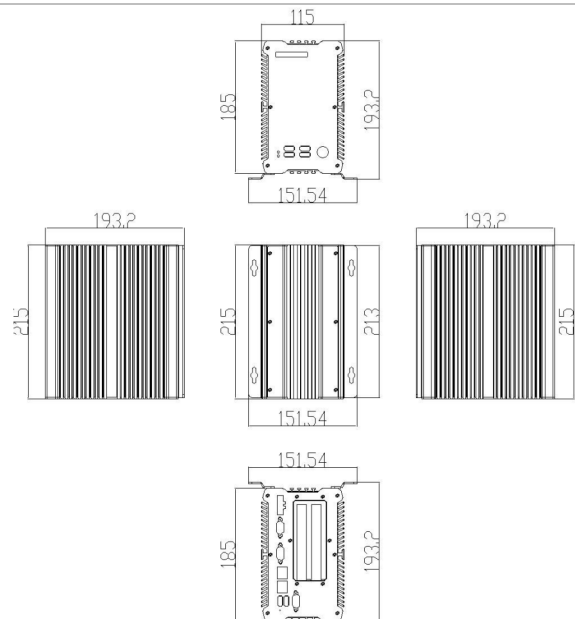
Please contact your Sales for more information on the WIFI, 3G/Bluetooth module solutions

Ordering Information

iSBX-6712A-3317U	Intel® Core™ i5 Dual Core 3317U Processor based Fanless Embedded Box PC with 6x USB Ports/4x COM Ports/VGA/Dual Gigabit LAN/2 PCI Slot/4GB RAM/500GB HDD
iSBX-6712B-3317U	Intel® Core™ i5 Dual Core 3317U Processor based Fanless Embedded Box PC with 6x USB Ports/4x COM Ports/VGA/Dual Gigabit LAN/2 PCIe x1 Slot/4GB RAM/500GB HDD



Dimension



SINETIC Technologies Inc, reserves the right to change or update without notice, any information contained herein; to change without notice, the design construction, materials, processing or specifications of any products and to discontinue or limit production or distribution of any products. © SINETIC Technologies Inc. All rights reserved. iSBX-6712-3317U Rev 1.0 Dated 201507